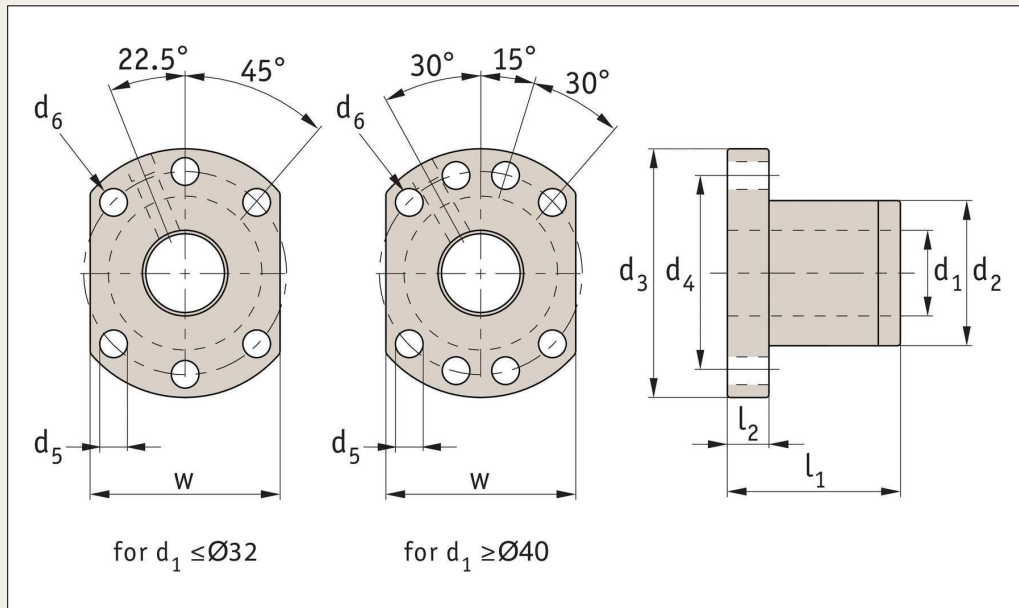


Flanged Ball Nuts

DIN 69051, form B



L1380

Material

Steel (16MnCr5 or 100Cr6), with Vulkolan seals.

Technical notes

To DIN 69051 form B.
Axial play for 5mm pitch = 0,05mm;
for 10mm pitch = 0,10mm; for multi-starts = 0,20mm.
Preload max. 5% of max. dynamic

load.

For axial run-out, concentricity and parallelism figures see technical pages.

With lubrication and fixing holes.
For use with ball screws no. L1385.

Tips

For easy mounting of the ball screw nuts see the nut bracket - part L1387.

For miniature ball screws Ø6 to Ø14 see part no. L1379.

Important notes

Fit ball nut to screw using the sleeve provided. Offer up the ball nut to the screw and slide carefully on. Do not remove the ball nut from the sleeve provided - the ball bearings can come loose rendering the ball nut unusable.

Order No.	d ₁ for screw Ø	Lead	Type	d ₂ g6	d ₃	d ₄	d ₅ for	d ₆	l ₁	l ₂	w ±0,15	Ball Ø	Max. dyn. load C kN	Max. static load C ₀ kN	Stiffness N/µ
L1380.16-05	16	5	type 1	28	48	38	M6	5,5	50	10	40	3,175	13,53	29,92	314
L1380.16-10	16	10	type 1	28	48	38	M6	5,5	57	10	40	3,175	10,82	23,55	255
L1380.20-05	20	5	type 1	36	58	47	M6	6,6	51	10	44	3,175	15,21	38,00	382
L1380.25-05	25	5	type 1	40	62	51	M6	6,6	51	10	48	3,175	16,91	48,09	441
L1380.25-10	25	10	type 1	40	62	51	M6	6,6	85	12	48	4,762	28,96	71,54	490
L1380.32-05	32	5	type 1	50	80	65	M6	9,0	52	12	62	3,175	18,85	62,21	529
L1380.32-10	32	10	type 1	50	80	65	M6	9,0	90	12	62	6,350	47,12	119,72	598
L1380.40-05	40	5	type 2	63	93	78	M8	9,0	55	14	70	3,175	20,69	78,34	617
L1380.40-10	40	10	type 2	63	93	78	M8	9,0	93	14	70	6,350	52,95	152,00	715
L1380.50-10	50	10	type 2	75	110	93	M8	11,0	93	16	85	6,350	58,88	192,35	833
L1380.63-10	63	10	type 2	90	125	108	M8	11,0	98	18	95	6,350	65,89	248,68	970
L1380.63-20	63	20	type 2	95	135	115	M8	13,5	149	20	100	9,525	112,23	359,44	1098
L1380.80-10	80	10	type 2	105	145	125	M8	14,0	98	20	110	6,350	72,04	313,36	1068
L1380.80-20	80	20	type 2	125	165	145	M8	13,5	154	25	130	9,525	126,61	468,24	1352